



Colin Dobbyne
Safari Specialist for Tanzania
Extreme Expedition Tours Limited

+447966 402359
colin@extremeexpedition.tours
<https://www.extreme-expedition.com>



Safari Msingi - Green Season 9 Nights Premium Tour **December to April per person**

Safari Msingi is named after the swahili word for 'essential' and the best time to enjoy it is between December and April when the Great Migration is in the southern Serengeti. Any Safari is a wonderful experience, but Msingi offers the explorers the chance to venture off to more remote areas that are rich in wildlife with amazing vistas; relying on the experience of the guide to go off the beaten path and not get lost (although that can be fun too!).

Safari Msingi begins with a short journey to Tarangire to acclimatise visitors to Africa and its culture before it climaxes with an unforgettable off- road exploration of Ndutu, the southern part of the Serengeti ecosystem that is outside the Serengeti National Park. At this time of year in Ndutu, the wildebeest will be found in great numbers as they give birth to their young and mums feast on the mineral rich grass to produce nourishing milk for their calves, getting them ready for the long migration north. The accommodation we have chosen comprises of camps and lodges that are privately owned and offer an authentic safari experience, without the frills, but in comfort and style that reflect the personality of the owners with a genuine taste of Africa.

Trip Summary

DAY 1: Arrival Day and Tumbili Lodge

Collection from Kilimanjaro Airport and Transfer to Tumbili Lodge

Tumbili Lodge, Arusha

DAY 2: Tarangire National Park and Tarangire Safari Lodge

Tarangire National Park

Tarangire Safari Lodge

DAY 3: Mto Wa Mbu and Baghayo Garden Suites

Explore Mto Wa Mbu

Baghayo Gardens

DAY 4: Transit via Ngorongoro Crater and Intimate Places Camp, Ndutu

Ngorongoro Crater View

Intimate Places Zebra Camp, Ndutu

DAY 6: Ndutu Southern Serengeti and Intimate Places Camp, Ndutu

Ndutu, Southern Serengeti

Intimate Places Zebra Camp, Ndutu

DAY 5: Ndutu and Central Serengeti and Zawadi Camp, Serengeti

Ndutu, Southern Serengeti

Serengeti Central Game Drive

Zawadi Serengeti Camp, Central Serengeti

DAY 7: Central Serengeti and Zawadi Camp, Serengeti

Serengeti Central Game Drive

Zawadi Serengeti Camp, Central Serengeti

DAY 8: Central Serengeti, Ngorongoro and Embalakai Camp

Serengeti Central Game Drive

Embalakai Authentic Camp, Ngorongoro

DAY 8: Ngorongoro Crater Game Drive and Baghayo Garden Suites

Ngorongoro Crater Tour

Baghayo Gardens

DAY 9: Check Out and Transfer to Kilimanjaro Airport

Transfer to Kilimanjaro Airport

DAY 1: Arrival Day and Tumbili Lodge



Collection from Kilimanjaro Airport and Transfer to Tumbili Lodge

Your guides and two of our jeeps will be eagerly waiting for you just at the arrivals doors and take you the 1 1/2 hour transfer to Tumbili Lodge for a welcome drink and briefing.



Tumbili Lodge, Arusha

Tumbili Lodge is a small boutique hotel situated in a beautiful lush garden with a stunning view on Mount Meru. All rooms and bandas are individually furnished and designed to offer great comfort and relaxation to its guests. The lodge is the perfect place to recover from a long journey and prepare for the adventure ahead.



DAY 2: Tarangire National Park and Tarangire Safari Lodge



Tarangire National Park

Tarangire is one of my favourite parks and is the sixth largest park in the country with 2,850 square kilometres of wilderness.

Elephants, and other animals, are always confident of finding water in Tarangire and in the driest of seasons they will dig the river bed or visit the swamp, a sort of water tank for the region. In desperate times, the elephants will strip the bark from the Baobab trees that define Tarangire and squeeze out the water.



Tarangire Safari Lodge

Since 1985, this family-owned & managed Tarangire Safari Lodge has been well known for its location and panoramic views. It caters for wildlife enthusiasts and those seeking rest and relaxation among one of Tanzania's most popular national parks.

Quintessential safari tents, with thatched roofs and large, mesh-screened windows, provide the perfect opportunity to connect with the sights and sounds of nature. Each tent has a comfortable verandah, ideal for bird and game viewing or reading your favourite book after a dusty safari.

With a choice of twin, double tents, or triple bungalows; all are equipped with en-suite bathrooms with solar-heated showers, ample cupboard space for your gear, and a cultural touch of local textiles.



DAY 3: Mto Wa Mbu and Baghayo Garden Suites



Explore Mto Wa Mbu

As we leave Tarangire we will pass by the bustling town of Mto Wa Mbu which is a little micro hub for safari supplies and street food. We will take a break to amble around this fascinating town which is a hive of activity with safari-goers, guides and camp workers as they prepare for the adventure.

There is so much to explore in Mto Wa Mbu: youth art projects; the makonde wood carvers; you have the option of a banana plantation walk where you can enjoy a traditional family lunch and drink mbege, banana beer!

Your tour will finish in the bustling local market, where you can wander around stalls selling fruit and vegetables stalls, spices and meat. Your guide will stop and explain points of interest, and give you the opportunity to try and smell a variety of foods. A real treat for the senses!



Baghayo Gardens

Each room is a suite, constructed from earthy brick and wood throughout and consists of a separate living room as well as a bedroom with en-suite bathroom. The living area is comfortably furnished with upholstered chairs in front of the working fireplace for cozy relaxing.



DAY 4: Transit via Ngorongoro Crater and Intimate Places Camp, Ndutu



Ngorongoro Crater View

The Ngorongoro Crater is the gateway to the Serengeti and we will stop at the view point to see the entire crater some 600 metres below. It is the world's largest caldera and hosts the highest concentration of wildlife in Africa.



Intimate Places Zebra Camp, Ndutu

Intimate Camp Zebra is the perfect place for visitors wishing to experience the miracle of the Great Wildebeest Migration, which is reputed to be the largest mass movement of animals on our planet.

With spacious and comfortable accommodation, Intimate Camp Zebra is a seasonal camp which has been especially designed to closely follow the migrating animals as they make their way around the Serengeti National Park.

This camp offers an authentic safari experience in comfort and style with outstanding food. For medium sized groups there is the option of an exclusive mobile camp.



DAY 6: Ndotu Southern Serengeti and Intimate Places Camp, Ndotu



Ndotu, Southern Serengeti

The Ndotu plains is located in the Ngorongoro Conservation Area, on the outskirts of the Southern Serengeti plains. These plains are enriched with tremendous acacia trees, providing a panoramic view across Lake Ndotu and Masek at the other end. It is one of the best places in the Ngorongoro Conservation Area to spot predators and enjoy the stunning landscapes. Standing here means you're in the midst of a calving ground for migratory wild animals, specifically the wildebeest migration. It is typically composed of vast swaths of short grassland, soda-lake Masek, marshes, and woodland vegetation that support both residents and migratory animals.



Intimate Places Zebra Camp, Ndotu

You will return to the friendly welcome awaiting you at camp ready for sundowners, charmed by the sounds of nature in the wilderness.

A freshen up and then dinner followed by nightcaps by the campfire under a starlit African sky with a comfy bed waiting for you for a great night's sleep.



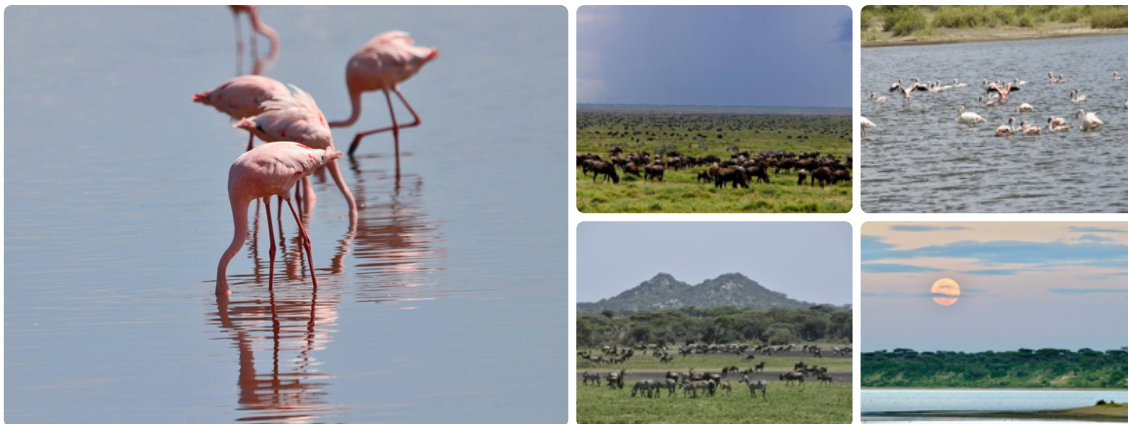
DAY 5: Ndotu and Central Serengeti and Zawadi Camp, Serengeti



Ndotu, Southern Serengeti

While Ndotu is an excellent game viewing area throughout the year, the best time to visit the Ndotu plains is from the end of December, when the Great Migration herds begin to arrive from the north, until April, when millions of wildebeest, gazelles, and zebras begin their journey northwards again. Due to the seasonal rains, massive herds of wildebeest and zebra can be seen all over these plains at this time of year.

Thousands of calves are born within Ndotu during the calving season, making Ndotu a home for new creatures on Earth. Giraffe, impala, elephant, dik dik, lion, cheetah, leopard, hyena, bat-eared fox, genet, jackal, wildcat, and many other animals end up living in Ndotu. The plains, marshes, and lakes to woodland attract an abundance of bird species.



Serengeti Central Game Drive

Meaning 'endless plains' in the Maasai language, the Serengeti is undoubtedly one of the world's most celebrated wilderness areas.

The Central Serengeti also has high-density game-viewing at all times and is well-known for its large concentration of cats, so much so that until recently this area was set aside for scientific research into predators, especially cheetah.

The big 5 are on everyone's list, and you're sure to see most if not all, but we might stumble upon an armadillo or the elusive leopard or even a serval or caracal cat. The beauty of the Serengeti is that you never know what you will find. there is always a surprise!



Zawadi Serengeti Camp, Central Serengeti

Enjoy an unforgettable stay at an intimate family-run boutique camp in the Serengeti wilderness. See magnificent wild animals on the Great Migration from your tent. Sustainable eco-camp that protects our environment and employs and trains local communities. Offering a wide variety of delicious, multi-cuisine food prepared daily by our chef with fresh local ingredients.

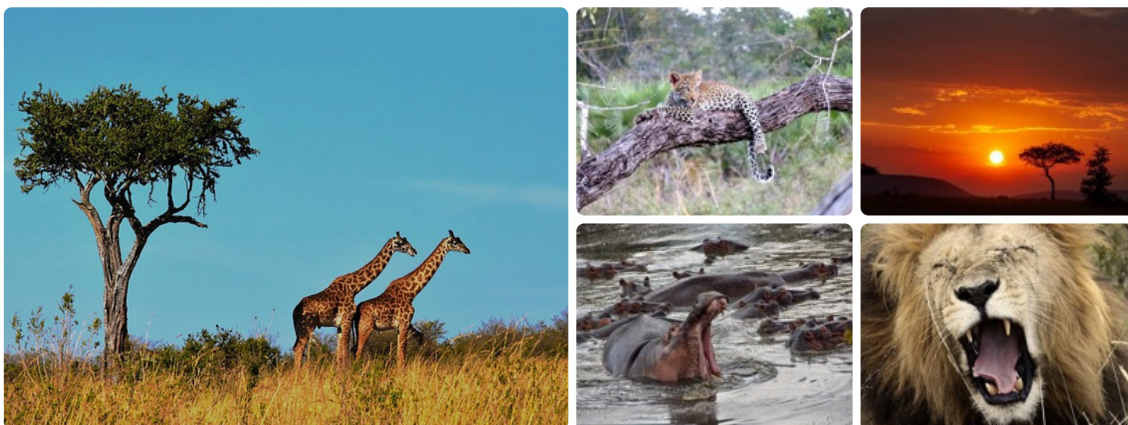


DAY 7: Central Serengeti and Zawadi Camp, Serengeti



Serengeti Central Game Drive

The big 5 are on everyone's list, and you're sure to see most if not all, but we might stumble upon an armadillo or the elusive leopard or even a serval or caracal cat. The beauty of the Serengeti is that you never know what you will find. there is always a surprise!



Zawadi Serengeti Camp, Central Serengeti

Returning to Zawadi Camp for a warm welcome to refresh and relax around the campfire ready for dinner.



DAY 8: Central Serengeti, Ngorongoro and Embalakai Camp



Serengeti Central Game Drive

We will have a morning game drive and then transit to our camp in Ngorongoro Crater in time for sunset.



Embalakai Authentic Camp, Ngorongoro

Embalakia Authentic Camp is an excellent place to stay in the Ngorongoro Conservation Area, this camp offers an authentic safari experience.

The camp provides comfortable tents and luxurious suites with modern amenities. Guests can enjoy the diverse wildlife of the area, including lions, elephants, and rhinos, through thrilling game drives led by experienced guides.

The camp has views over the local acacia trees and out to the far-off hills. It is close to the Elerai River and the Maasai bomas. The dining area, where you will eat breakfast and dinner, is located in the main tent. The deck is the ideal location for watching the sun set over the far-off hills while sipping a cool sundowner. In the evening after dinner you can unwind at the fire pit area, where you can share all your safari tales and experiences or perhaps hear from some of the team.



DAY 8: Ngorongoro Crater Game Drive and Baghayo Garden Suites



Ngorongoro Crater Tour

The Ngorongoro Crater is the world's largest intact and unfilled volcanic caldera and the Ngorongoro Conservation Area's main tourists' attraction. It is the largest and most scenic crater in the Ngorongoro Conservation Area, with a large concentration of wildlife. It is also one of Africa's Seven Natural Wonders due to its breathtaking natural features. The Ngorongoro Crater is known as a home to over 25,000 animals, including the big five; elephants, buffaloes, rhinos, lions and leopards.

Other animals found in this crater include hippos, hyenas, warhogs, zebras, elands, gazelles, wildebeests, just to name a few. This makes Ngorongoro Crater probably the best site in Tanzania to spot and watch the big five as well as other wild species more easily.



Baghayo Gardens

Each room has beautiful views over the valleys, farms and coffee plantations to the Ngorongoro Forest and distant hills. Amenities include large walk-in shower, separate WC, personal products in pump jars, hairdryers and room safes for your valuables.



DAY 9: Check Out and Transfer to Kilimanjaro Airport



Transfer to Kilimanjaro Airport

Sadly it is time to say goodbye and we hope that although you came as strangers, you will leave as dear friends of Tanzania and its marvellous people and we welcome you back again soon.

We will schedule a VIP transfer from your residence to the airport for your onward journey or flight home (approx 3 hour).

Safari njema!

